

NLRX1 Polyclonal Antibody
Catalog # AP73985**Specification****NLRX1 Polyclonal Antibody - Product Information**

Application	WB, IHC-P
Primary Accession	Q86UT6
Reactivity	Human, Mouse, Rat
Host	Rabbit
Clonality	Polyclonal

NLRX1 Polyclonal Antibody - Additional Information**Gene ID** 79671**Other Names**

NLR family member X1 (Caterpillar protein 11.3) (CLR11.3) (Nucleotide-binding oligomerization domain protein 26) (Nucleotide-binding oligomerization domain protein 5) (Nucleotide-binding oligomerization domain protein 9)

Dilution

WB~~WB 1:500-2000, IHC-p 1:50-300, ELISA 1:10000-20000
IHC-P~~N/A

Format

Liquid in PBS containing 50% glycerol, 0.5% BSA and 0.09% (W/V) sodium azide.

Storage Conditions

-20°C

NLRX1 Polyclonal Antibody - Protein Information**Name** NLRX1**Function**

Participates in antiviral signaling. Acts as a negative regulator of MAVS-mediated antiviral responses, through the inhibition of the virus-induced RLH (RIG-like helicase)-MAVS interaction (PubMed:18200010). Instead, promotes autophagy by interacting with TUFM and subsequently recruiting the autophagy-related proteins ATG5 and ATG12 (PubMed:22749352). Also regulates MAVS-dependent NLRP3 inflammasome activation to attenuate apoptosis (PubMed:27393910). Has no inhibitory function on NF-kappa-B signaling pathway, but enhances NF-kappa-B and JUN N-terminal kinase dependent signaling through the production of reactive oxygen species (PubMed:18219313). Regulates viral mediated-inflammation and energy metabolism in a sex-dependent manner (By similarity). In females, prevents uncontrolled inflammation and energy metabolism and thus, may contribute to

the sex differences observed in infectious and inflammatory diseases (By similarity).

Cellular Location

Mitochondrion outer membrane

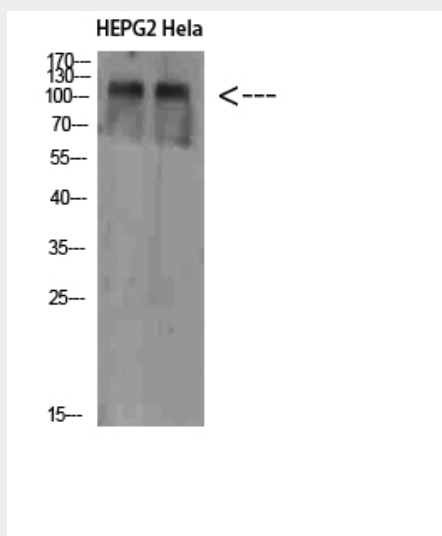
Tissue Location

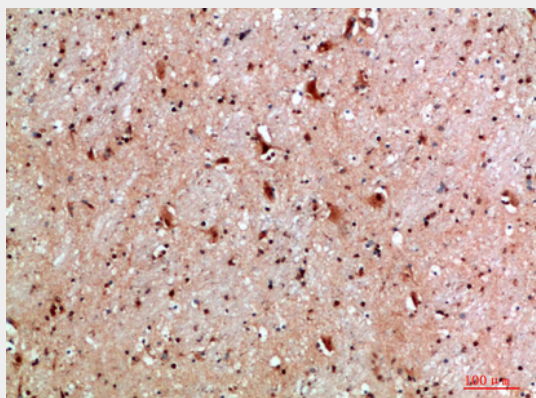
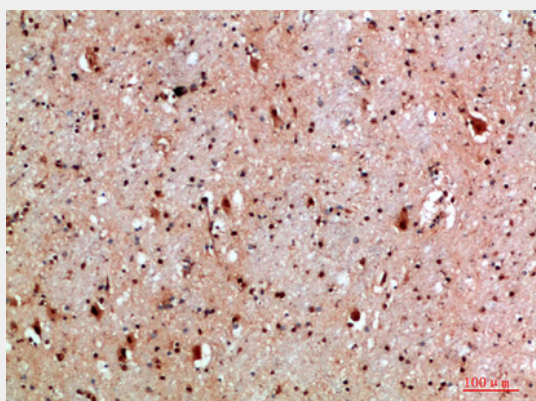
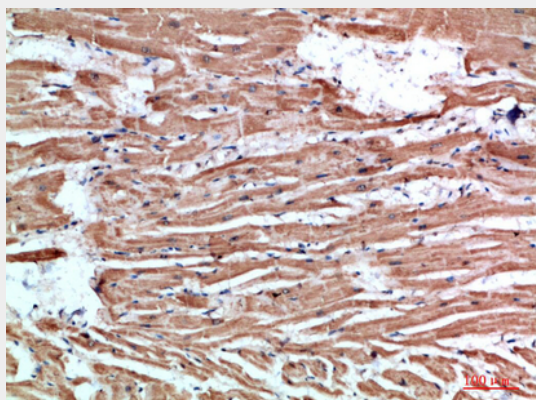
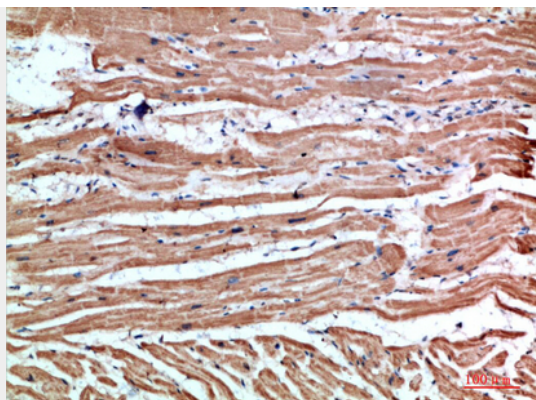
Ubiquitously expressed. Strongest expression in mammary gland, heart and muscle. Detected in HeLa, HEK293T, THP-1, HL- 60, Raji and Jurkat cell lines (at protein level)

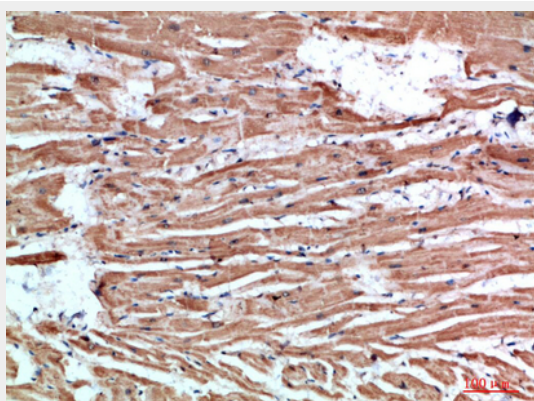
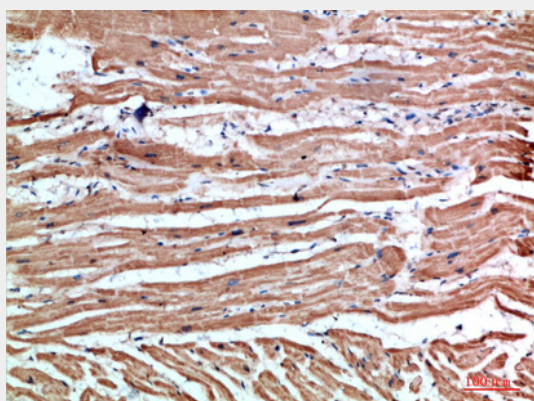
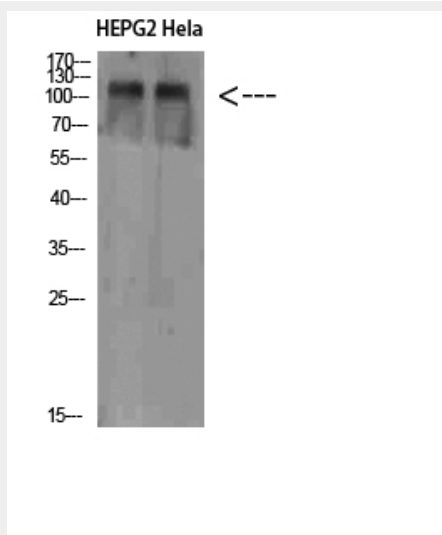
NLRX1 Polyclonal Antibody - Protocols

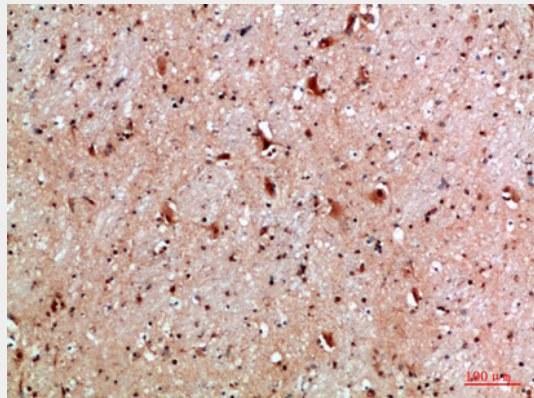
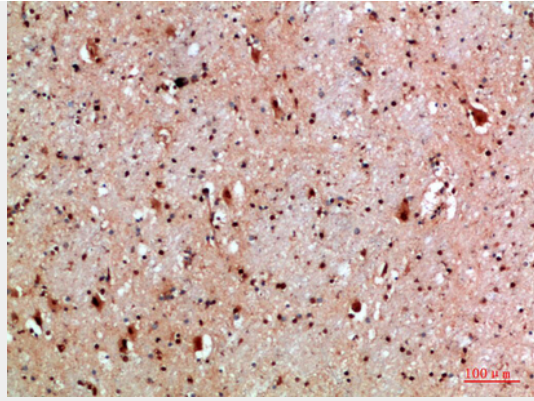
Provided below are standard protocols that you may find useful for product applications.

- [Western Blot](#)
- [Blocking Peptides](#)
- [Dot Blot](#)
- [Immunohistochemistry](#)
- [Immunofluorescence](#)
- [Immunoprecipitation](#)
- [Flow Cytometry](#)
- [Cell Culture](#)

NLRX1 Polyclonal Antibody - Images







NLRX1 Polyclonal Antibody - Background

Participates in antiviral signaling. Acts as a negative regulator of MAVS-mediated antiviral responses, through the inhibition of the virus-induced RLH (RIG-like helicase)-MAVS interaction (PubMed:18200010). Instead, promotes autophagy by interacting with TUFM and subsequently recruiting the autophagy-related proteins ATG5 and ATG12 (PubMed:22749352). Regulates also MAVS-dependent NLRP3 inflammasome activation to attenuate apoptosis (PubMed:27393910). Has no inhibitory function on NF- kappa-B signaling pathway, but enhances NF-kappa-B and JUN N-terminal kinase dependent signaling through the production of reactive oxygen species (PubMed:18219313).